

A Ten Year Climatology of Rainfall Over Portland, Maine.

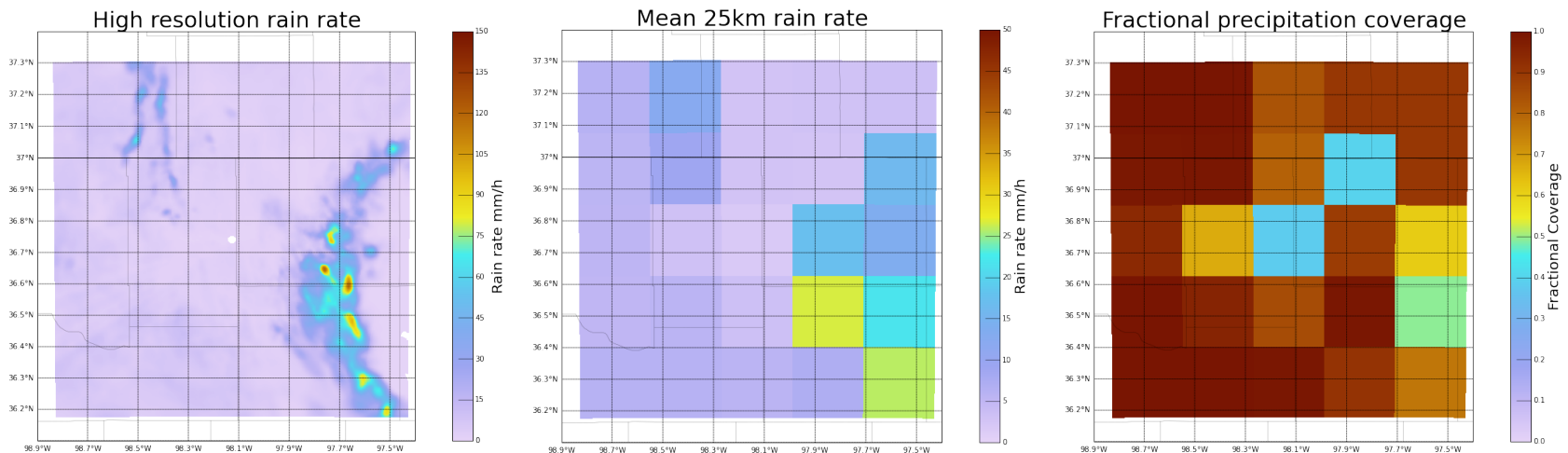


Scott Collis, Environmental Science Division, Argonne National Laboratory.

Argonne National Laboratory's work was supported by the U.S. Department of Energy, Office of Science, Office of Biological and Environmental Research (OBER), under Contract DE-AC02-06CH11357. The work is supported by the Department of Homeland Security as part of the Regional Resiliency Assessment Program. We gratefully acknowledge the computing resources provided on Blues, a high-performance computing cluster operated by the Laboratory Computing Resource Center at Argonne National Laboratory.

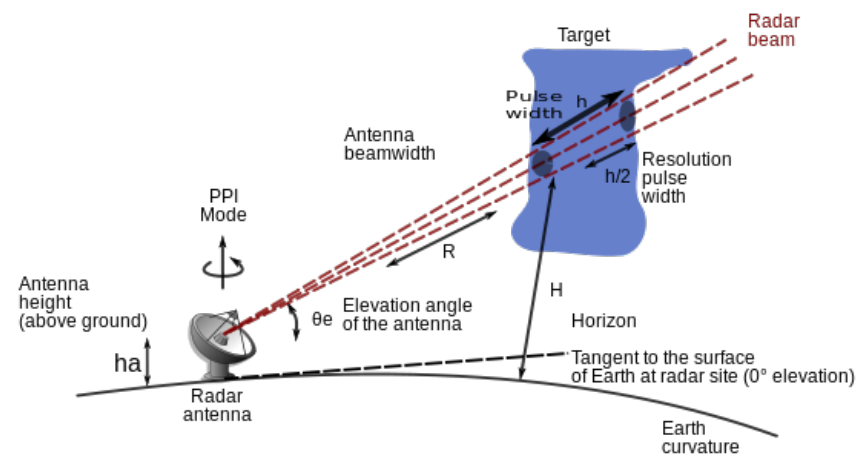
Motivation: Scales of precipitation.

- Decision makers need data on how the return time in high end precipitation events will vary in a changing climate.
- The traditional tool is to "downscale" course grid climate models using a variety of techniques.
- Typical resolutions are 12-25km.
- The question we ask is: *Is this fine scale enough to capture high intensity rainfall accumulations.*



Initial charge: Produce high resolution rainfall maps over Portland, Maine.

- One month project to produce high resolution maps of rainfall rate over the Portland, Maine, area.
- Mapping data in radial coordinates of azimuth, elevation and range to a user friendly Cartesian grid.
- NetCDF files that are CF-Compliant which will be used by hydrologists to see the impact of reducing the resolution on final streamflow.
- Basic QC and indexing of events.

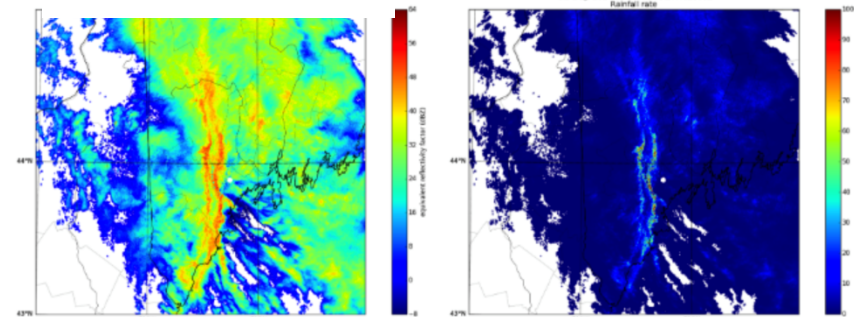


Methodology

- Radars measure a quantity known as reflectivity factor. This is simply how reflective a bunch of “Stuff” is (be it raindrops, ice particles, birds, bats or even TV towers).
- For a given volume of “stuff” the reflectivity factor is the 6th moment of the PDF of drops in that volume.. So a couple of big drops can have a greater impact than many small drops.
- However, for a given distribution of drops common in nature a simple relation between reflectivity and rainfall rate has been determined.
- We apply this, and then use a Barnes filter (inverse distance weighted) to map to a X/Y grid.

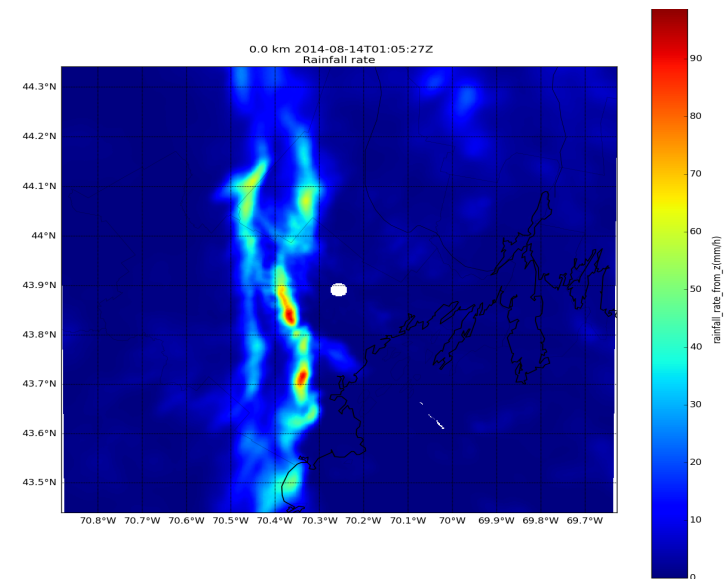
$$Z_e = \int N(D)D^6 dD$$

$$Z_e = 300R^{1.4}$$



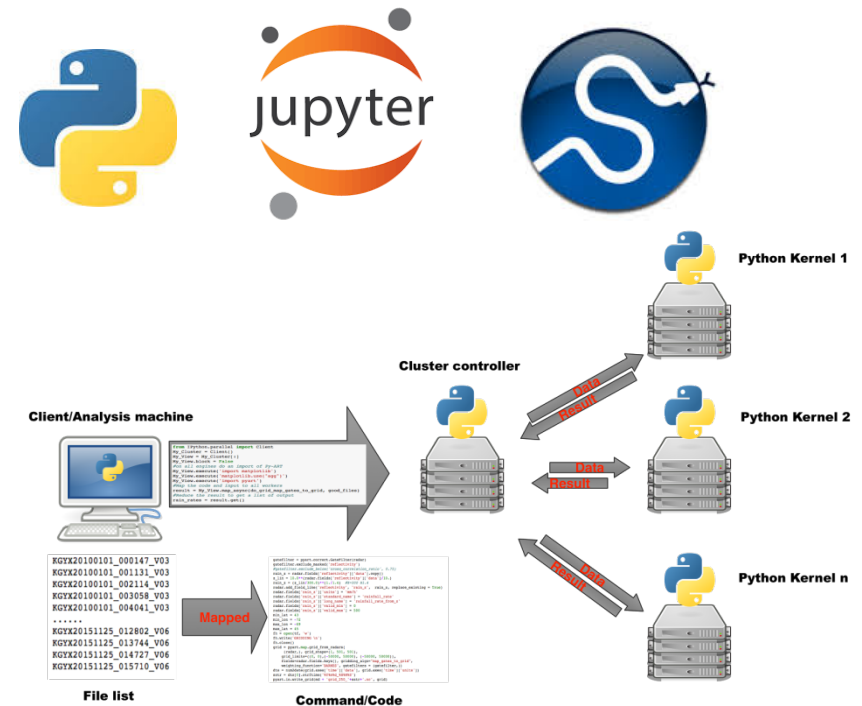
(a) Radar Reflectivity.

(b) Rainfall rate.



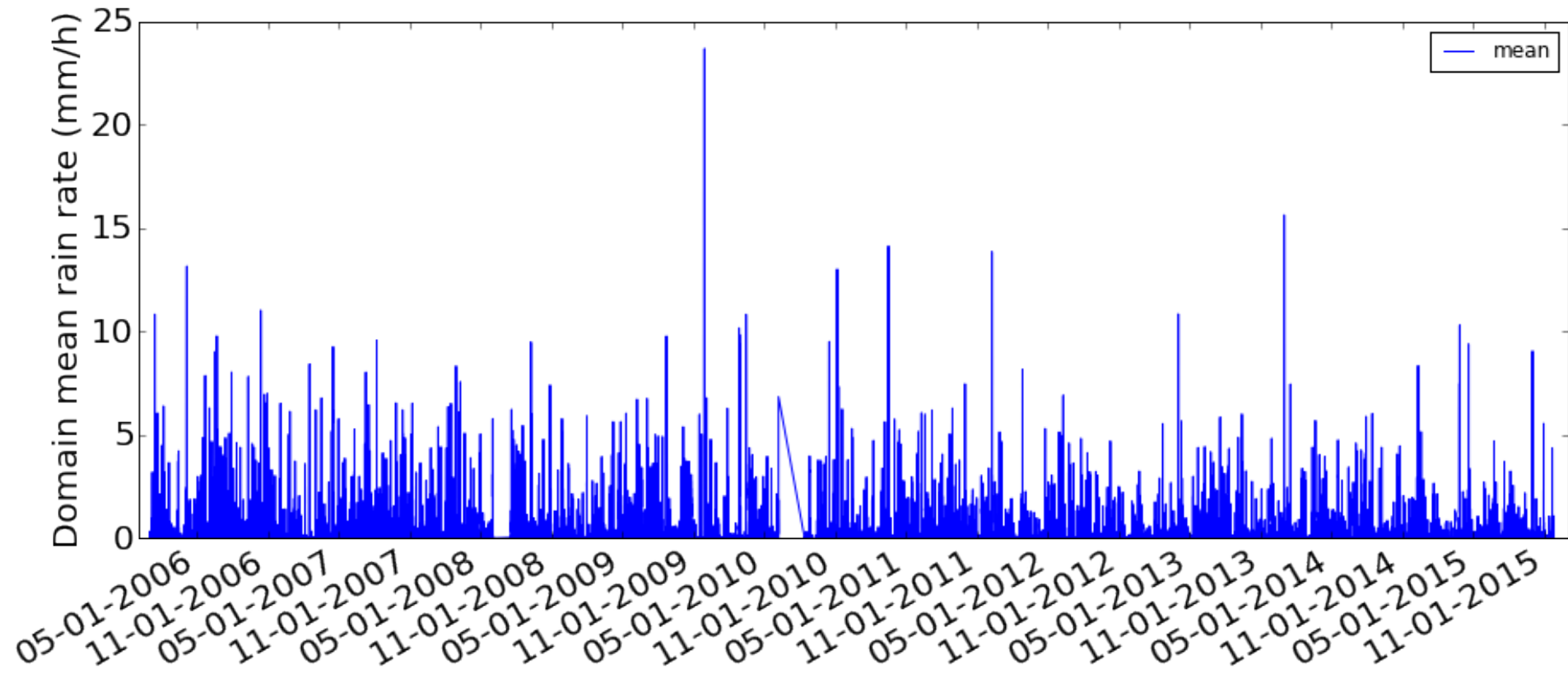
Computational Setup

- Files were downloaded from NCEI's HAS service and staged on Argonne's midrange cluster, Blues.
- 670,353 individual radar files. Each covering 5-10 minutes in time.
- The Python-ARM Radar Toolkit was used to perform IO and calculations.
- We used Ipython Cluster which is part of project Jupyter to map the problem to 100's to 1000's of cores on the cluster.
- We used 8,000 core hours and just over 48 hours of wall time for the analysis.



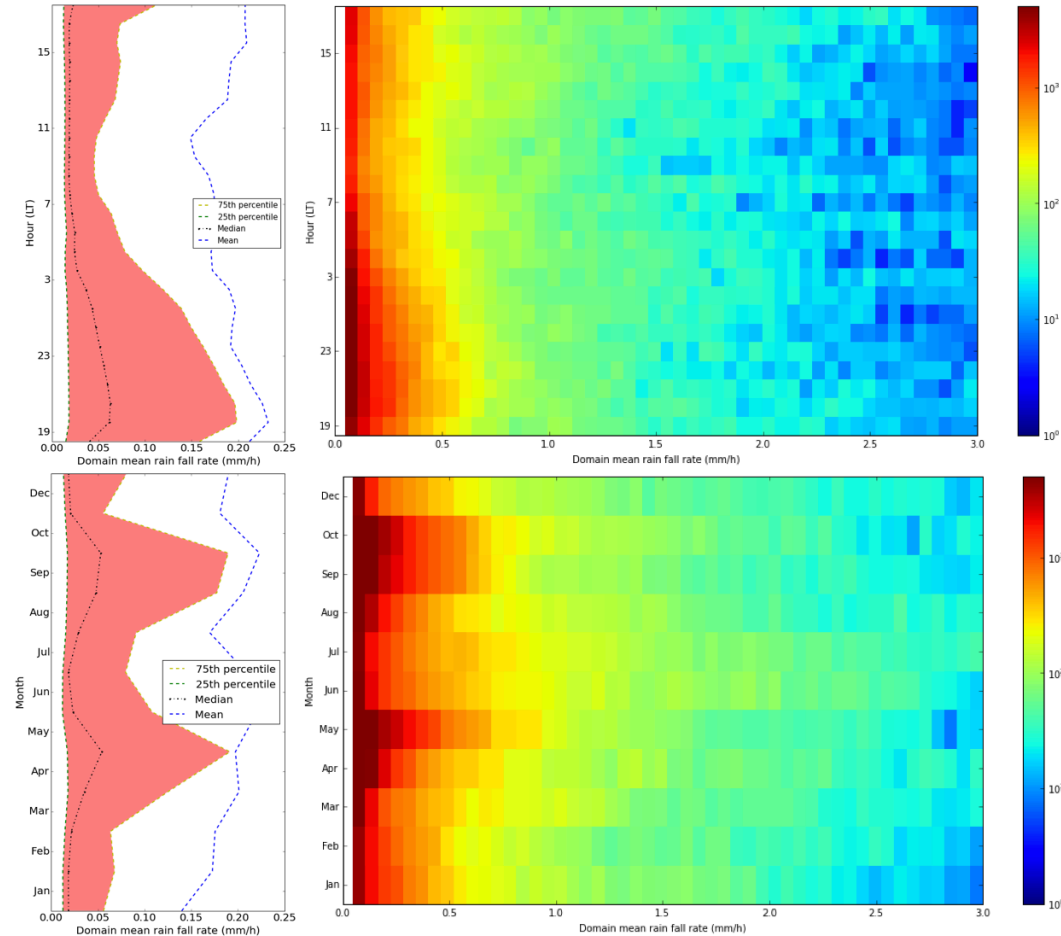
Results

- As we computed the rainfall grid we saved the domain mean and maximum rainfall rate.
- 10TB of radar data -> 1TB of rainfall grids -> 100MB of searchable domain means.
- Phenomenal uptime. Many season. Just a small gap in 2010.



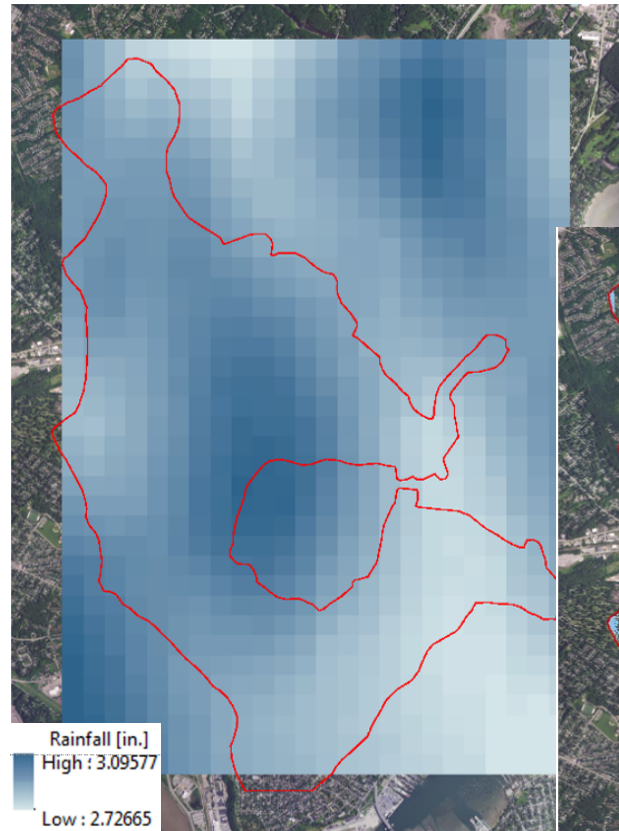
Results (2)

- Since we have all this data we decided to perform some simple stratifying of the data.
- We binned the data by month of the year and hour of the day and looked at the histogram of domain mean rainfall rate.
- Histograms and percentile plots show a peak in rainfall overnight (consistent with many TRMM based studies).
- In addition and spring and fall peak in the frequency of lower rates, however the peak in extremes in rainfall rate occurs over summer.

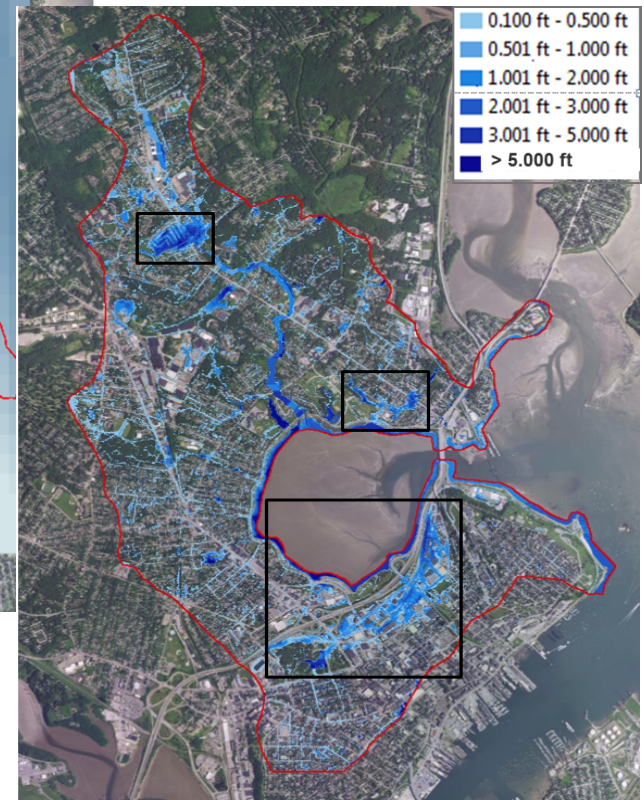


Radar Data For High-Resolution Hydrologic Modeling

Peak Rainfall Distribution



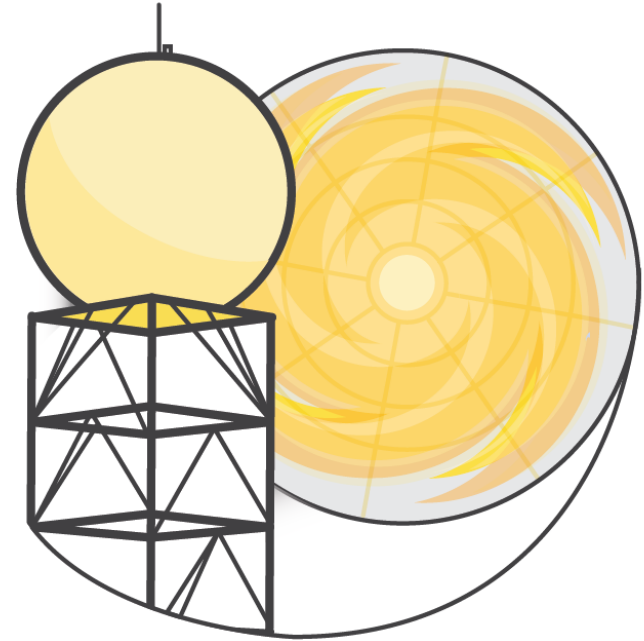
Peak Flooding Depth



- Back Cove in Portland, ME was heavily damaged during the 2007 April storm event
- Radar-derived rainfall data with a 250-m resolution rainfall distribution vs. only on rain gage in the entire area
- 2-D Hydrologic/hydraulic modeling (15 ft x 15 ft) including building, street, and all other structures

The Future

- The task for our group was to deliver grids of rainfall events to the Hydrological modelling team and then work with them to couple to the model.
- The first task is done, the second is ongoing.
- Grids only have basic QC and ignore the latest advances in rainfall retrieval and could contain artifacts (eg we have not filtered for snow events). But act as a starting point. QC is **VITAL** if we want to study trends.
- Using mean rainfall rate is crude. So many other interesting ways we could dissect the data.
- We will make the data available, still working out the best way (AWS S3 bucket).
- Keen to collaborate and continue this work. Need to look into funding.



NEXRAD now in the Amazon Cloud