

Post-Hurricane Policy Impact Survey: U.S. Northeast Regional Analysis

January 31, 2019

Presented by
William Solecki and Parisa Seyatesh
City University of New York – Hunter College and
Graduate Center



Project Introduction

- Study aims to understand how extreme events such as Tropical Storms Irene and Lee (both in 2011) and Hurricane Sandy (in 2012) have impacted planning for extreme events and planning for climate risks in the Northeast Region of the U.S.
- It is understood that these storms generated many climate resiliency adjustments in organizations, agencies and institutions in the region. Such as:
 1. Relatively small shifts (e.g., changes in codes and standards)
 2. Implementation of new policies (such as new guidelines)
 3. Discussions for organizational transformations (which may not have been implemented yet)
- Key Rationale: Better understand conditions of how governmental entities can be pro-active as opposed to re-active in the face of future extreme events.

Research Objective

These three storms directly impacted specific areas of the Northeast Region of the United States. This survey aims to investigate these storms' continued impact across the wider region with the aim of helping researchers understand how extreme events can be catalyzers or obstacles for organizational or institutional changes in the impacted areas and beyond them.

This can be important in determining climate resiliency policy, especially in areas that were not directly effected.

Research Questions

- How and to what level did these recent extreme events effect the areas of focus for these organizations?
- What type of changes did these organizations aim to implement?
- What were the key hindrances and obstacles to implementing these changes?
- What is the relationship between level and type of impact and institutional change in the face of extreme events?

Null hypothesis: the level of storm impact is positively associated with the amount/level of policy response.

Survey Design

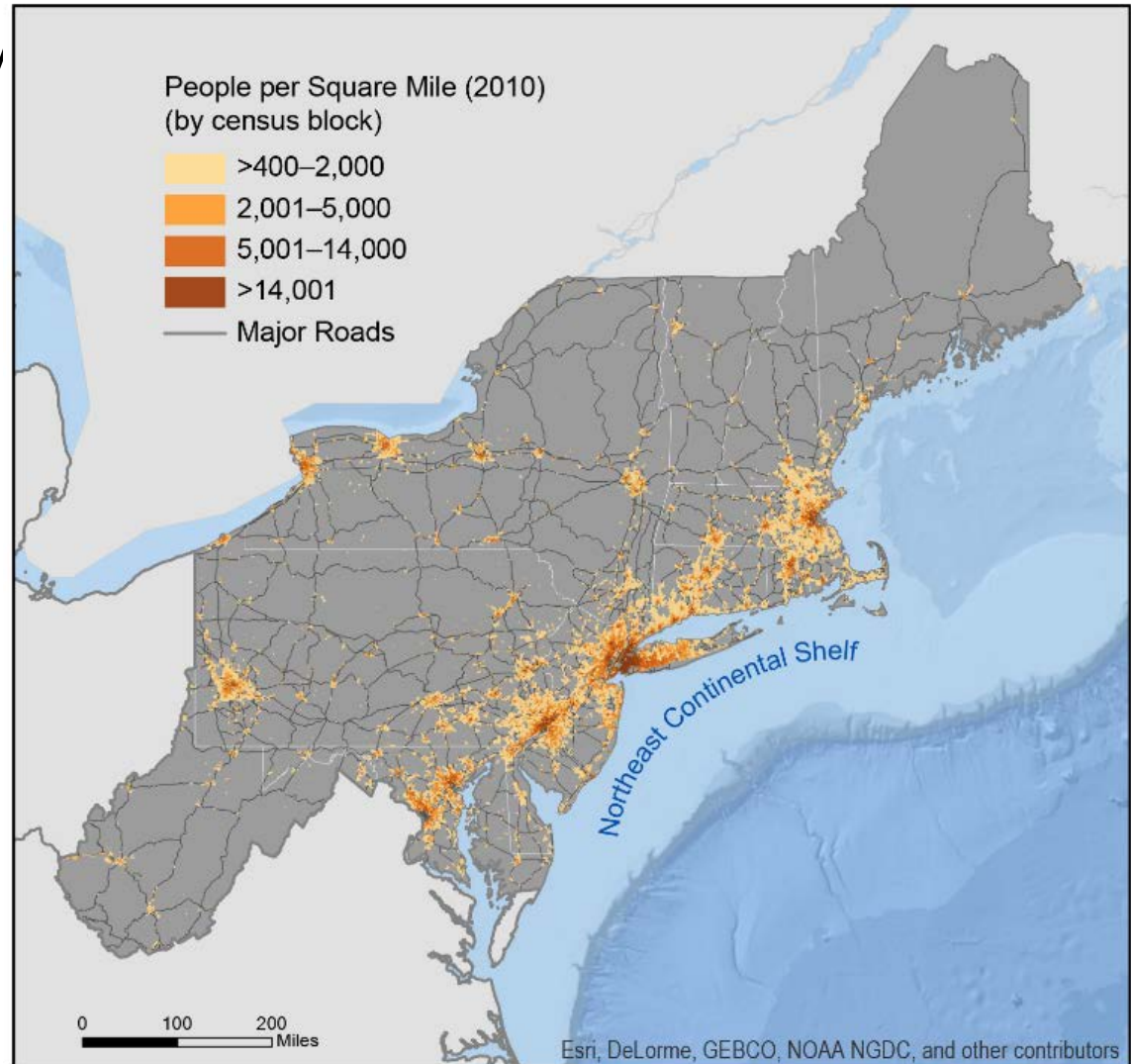
The survey questions are organized in three basic sections.

1. Identify the type of institution (e.g. governmental scale, mission) and how much the locality in which it operates was impacted.
2. Elaborate what type and level of changes were envisioned in the post-event context
3. Focus on the obstacles that the institution faced trying to implement the envisioned changes.

States where the survey will be conducted

- Connecticut
- Delaware
- Maine
- Maryland
- Massachusetts
- New Hampshire
- New Jersey
- New York
- Pennsylvania
- Rhode Island
- Vermont

NCA4 Northeast Region besides West Virginia



Next Steps

- Develop a broad-based sample of practitioners and policy-makers in the U.S. Northeast states (optimal ~ 35-40 responses per state)
- Include a variety of agencies, organizations, and institutions in each state – want to have representative sample; can't assume a random sample
- Survey Monkey website (already in place but a few edits are to be done – will go live on **February 15, 2019** @ <https://www.surveymonkey.com/r/75LTLCD>)
- Survey takes about 15-20 minutes with closed and open ended questions
- Optimally it would be done by one representative of each agency
- Results will be shared in a future public Consortium for Climate Risk in the Urban Northeast (www.ccrun.org) webinar

Thank you.

Contact: m.p.setayesh@gmail.com
wsolecki@hunter.cuny.edu