



OWP | OFFICE OF
WATER
PREDICTION

Implementation of Forecast Flood Inundation Services To The Nation - An Update



David R. Vallee

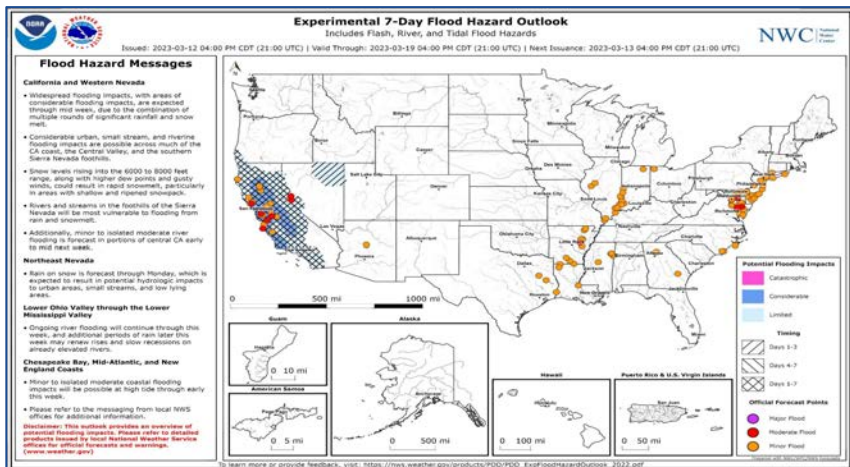
*Director, Service Innovation and Partnership Division
NOAA/NWS Office of Water Prediction/National Water Center*

Outline for this session

- The Latest on NWC/WPOD Experimental Services
- Introducing our new National Water Prediction Service!!!
(formally known as AHPS)
- FIM Rollout - an update on our progress



Experimental Products & Services



National Water Center Products and Services Operational and Experimental

Office of Water Prediction
National Program

[Weather.gov](#) > [Office of Water Prediction](#) > National Water Center Products and Services

<https://www.weather.gov/owp/operations>

NWS
National
Weather
Service



NEW! - National Water Prediction Service (NWPS) - NEW!

On March 27, 2024, the National Water Prediction Service (NWPS) website hosted at <https://water.noaa.gov> was launched replacing the legacy Advanced Hydrologic Prediction Service (AHPS) page previously located at <https://water.weather.gov>. Resources and more information are listed below.

Public Notification Statement: November 16, 2023
Service Change Notice (SCN): January 12, 2024
SCN: March 6, 2024

NWPS Flyer
NWPS API Flyer
NWPS Fact Sheet
NWPS Overview (Story Map)
NWPS Product and User Guide
Recording of NWPS Partner Webinar
Recording of NWPS API Webinar
Service Description Document (SDD)

Contact: nwps.webmaster@noaa.gov



Flood Inundation Mapping (FIM) Services

Experimental services depicting the extent of predicted inundation, as derived from River Forecast Center forecasts and National Water Model analyses and forecasts. Services are available via the "Viewer", or directly via URL's hosted on the Hydrologic Visualization and Inundation Services (HydroVIS) cloud system. These services are currently only available for an area that includes 10% of the U.S. population but will be expanded later. Additional informational resources are available below.

Public Notification Statement (PNS)
FIM Fact Sheet
Frequently Asked Questions (FAQs)
FIM Service Description Document (SDD)
Viewer Access Instructions
API Access Instructions

[CLICK HERE to Provide Feedback.](#)



Area Hydrologic Discussion

Experimental short range, episodic discussion and graphics which highlights locations across the nation that may be impacted by rapid-onset flooding, using National Water Model and other guidance.

AHD Product Description Document
Provide Feedback on AHD
AHD One-Pager



Flood Hazard Outlook

High Level graphical depiction and key messages highlighting the potential threat of inland flood hazards (flash, urban, small stream and riverine) and their associated impacts (oatstragic, considerable, and limited) for the next seven days.

FHO Product Description Document
Provide Feedback on FHO
FHO One-Pager



National Hydrologic Discussion

Experimental discussion of the current and forecast hydrologic conditions across the nation, including a variety of short and medium range (Days 1-10) observed and modeled hydrologic guidance.

NHD Product Description Document
Provide Feedback on NHD
NHD One-Pager



Significant River Flood Outlook

Operational flood outlook intended to provide a general outlook for significant (moderate and above) river flooding. It is not intended to depict all areas of minor flooding or small-scale events such as localized flooding and/or flash flooding.



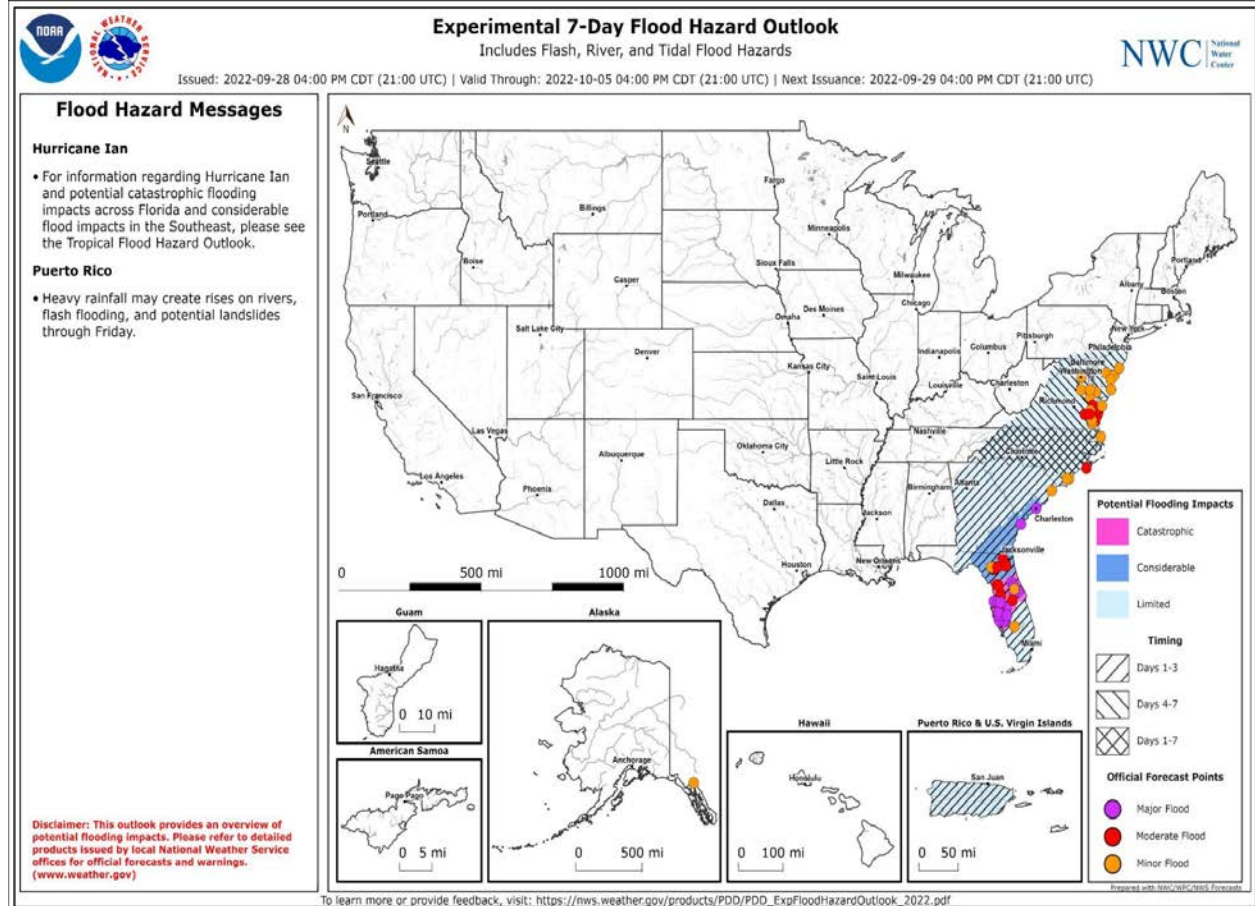
NWS Visualization Services

Experimental geospatial services depicting forecasts from the River Forecast Centers and the National Water Model. Services available via the prototype NWS National Map Viewer, or directly via URL's hosted on the Hydrologic Visualization and Inundation Services (HydroVIS) cloud resource.

Public Services Handbook

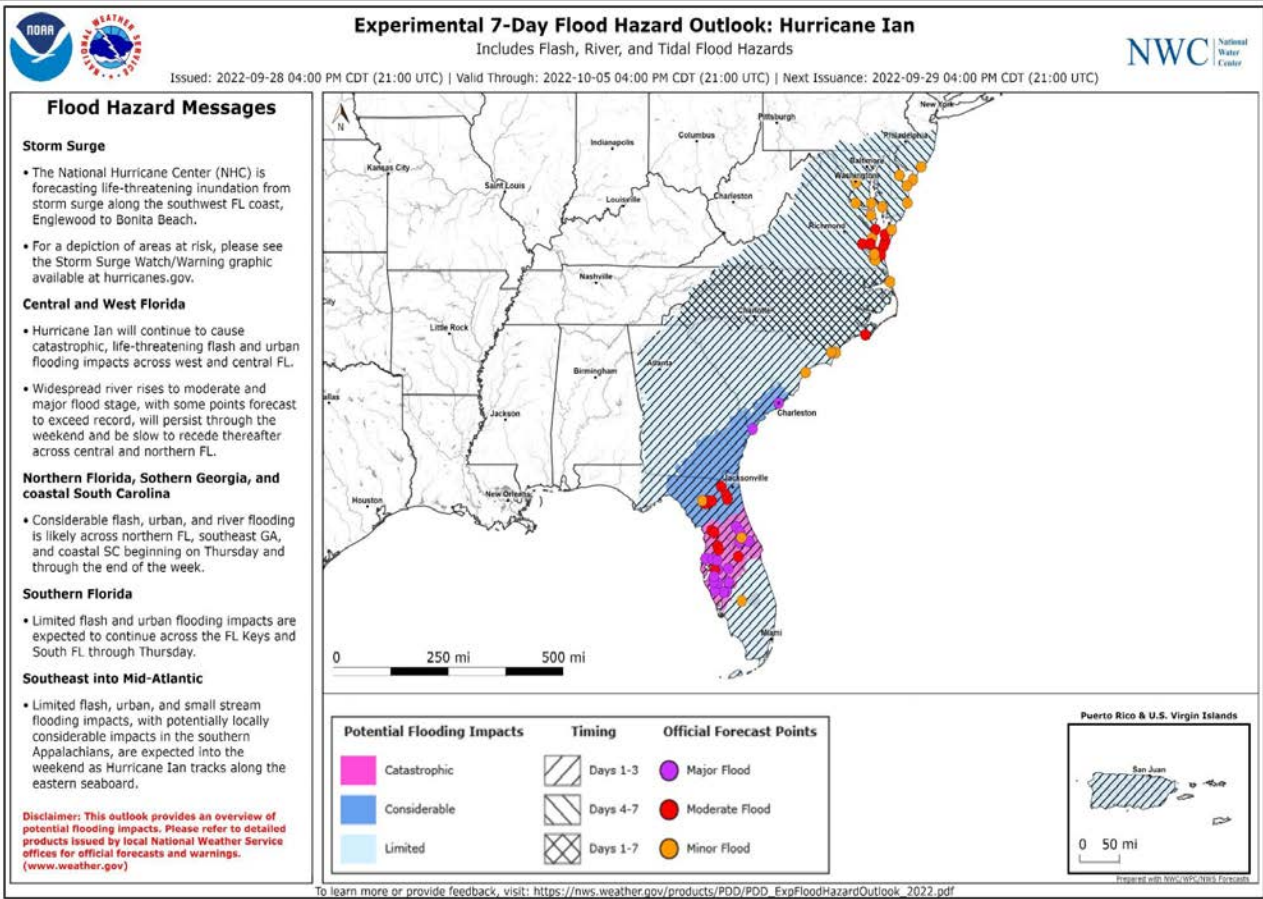
FHO

- High Level
- Heads-up
- 7-Day Outlook
- Comprehensive
- 3 Categories
- 3 Timing Bins
- 2xday @7 AM and 4 PM CT
- Static Map
- Map Service
- Archive



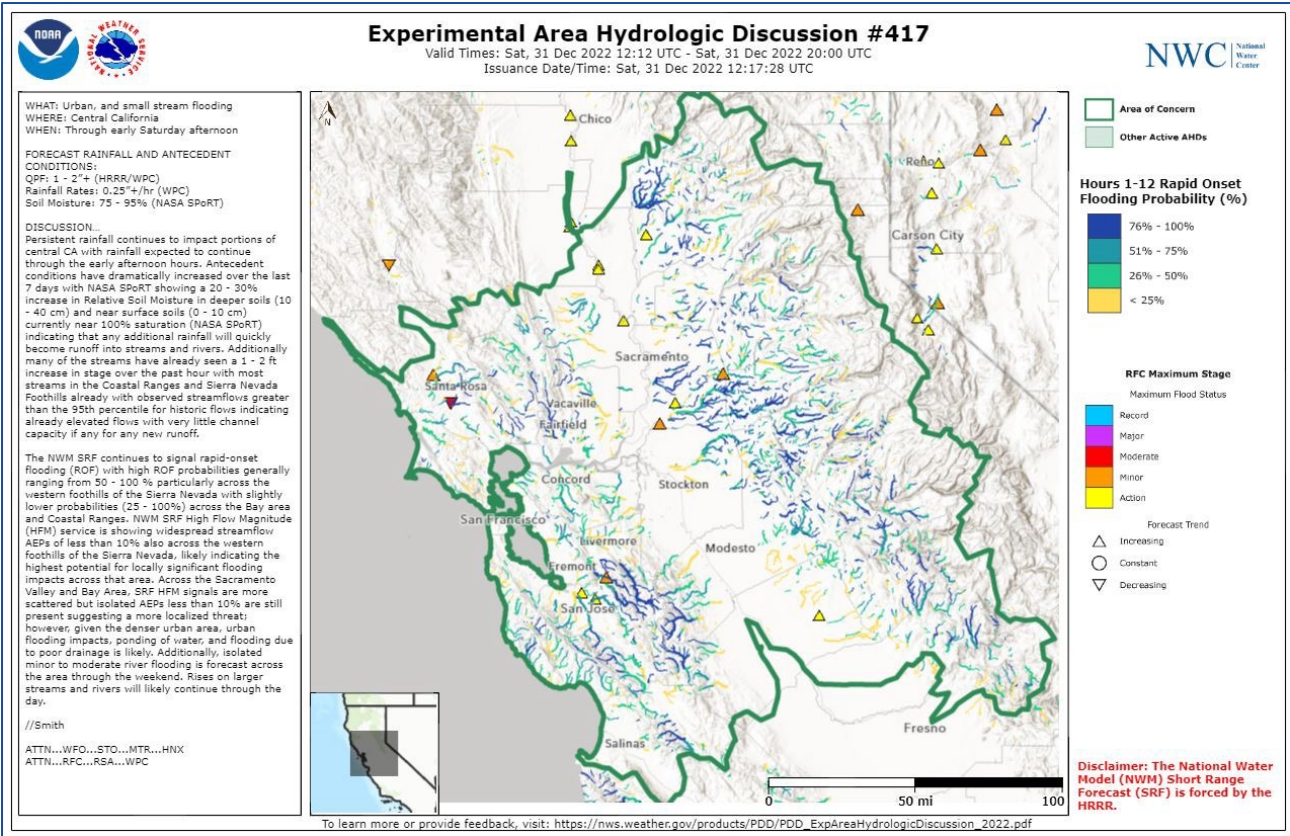
Tropical FHO

- More focused text
- 2x day
 - @7 AM CT
 - @4 PM CT
- Static Map
- Map Service



AHD

- Episodic
- 2-6 hrs
- Rapid-onset Flooding
- Flash
- Urban
- Small Stream
- WPC Coordination
- Inform WFO
- Warning Workflow
- PIL: AHDNWC
- Archive



NWM and FIM Services - NWS National Viewer

<https://viewer.weather.noaa.gov/water>

NWS GIS Viewer | Water

LAYERS

Search layers, folders and bookmarks

LEGEND

- Flood Inundation Maps (FIM) (EXPERIMENTAL)
 - NWM Latest Analysis (Zoom level 18+) (OO)
 - RFC 5-Day Max Forecast (Zoom level 18+) (OO)
 - NWM 5-Day Max Forecast (GFS) (Zoom level 18+) (OO)
 - FIM Coverage Domain (OO)
 - Opacity :100%
 - FIM Coastal Exclusion Zone (OO)
- Flood Products**
 - River Observations and Forecasts**
 - Advanced Hydrologic Prediction Service (AHPS) River Gauges
 - Land Analysis**
 - National Water Model (NWM) Output**
 - CONUS Precipitation (inches)
 - Hawaii Precipitation (inches) (OO)
 - Puerto Rico Precipitation (inches) (OO)
 - Streamflow Anomaly Analysis**
 - High Flow Magnitude Analysis**
 - Medium-Range High Water Arrival Time Forecast**
 - Medium-Range High Water Probability Forecast**
 - Medium-Range Max High Flow Magnitude Forecast**
 - 3 Days - Est. Annual Exceedance Probability (OO)
 - 5 Days - Est. Annual Exceedance Probability (OO)
 - Opacity :100%
 - 10 Days - Est. Annual Exceedance Probability (OO)
 - Medium-Range Rapid Onset Flooding Forecast**
 - Medium-Range Rapid Onset Flooding Probability**
 - Medium-Range Peak Flow Arrival Time Forecast**
 - Flowlines**
 - Short-Range High Water Arrival Time Forecast**
 - Short-Range High Water Probability Forecast**
 - Short-Range Max High Flow Magnitude Forecast**
 - Short-Range Rapid Onset Flooding**
 - Short-Range Rapid Onset Flooding Probability**

OTHER

- CHANGE SITE
- LOGIN

Sources: Esri, HERE, Garmin, FAO, NOAA, USGS, © OpenStreetMap contributors, and the GIS User Community

500 km

Scale: 1 : 10,734,306

Zoom: 8.5

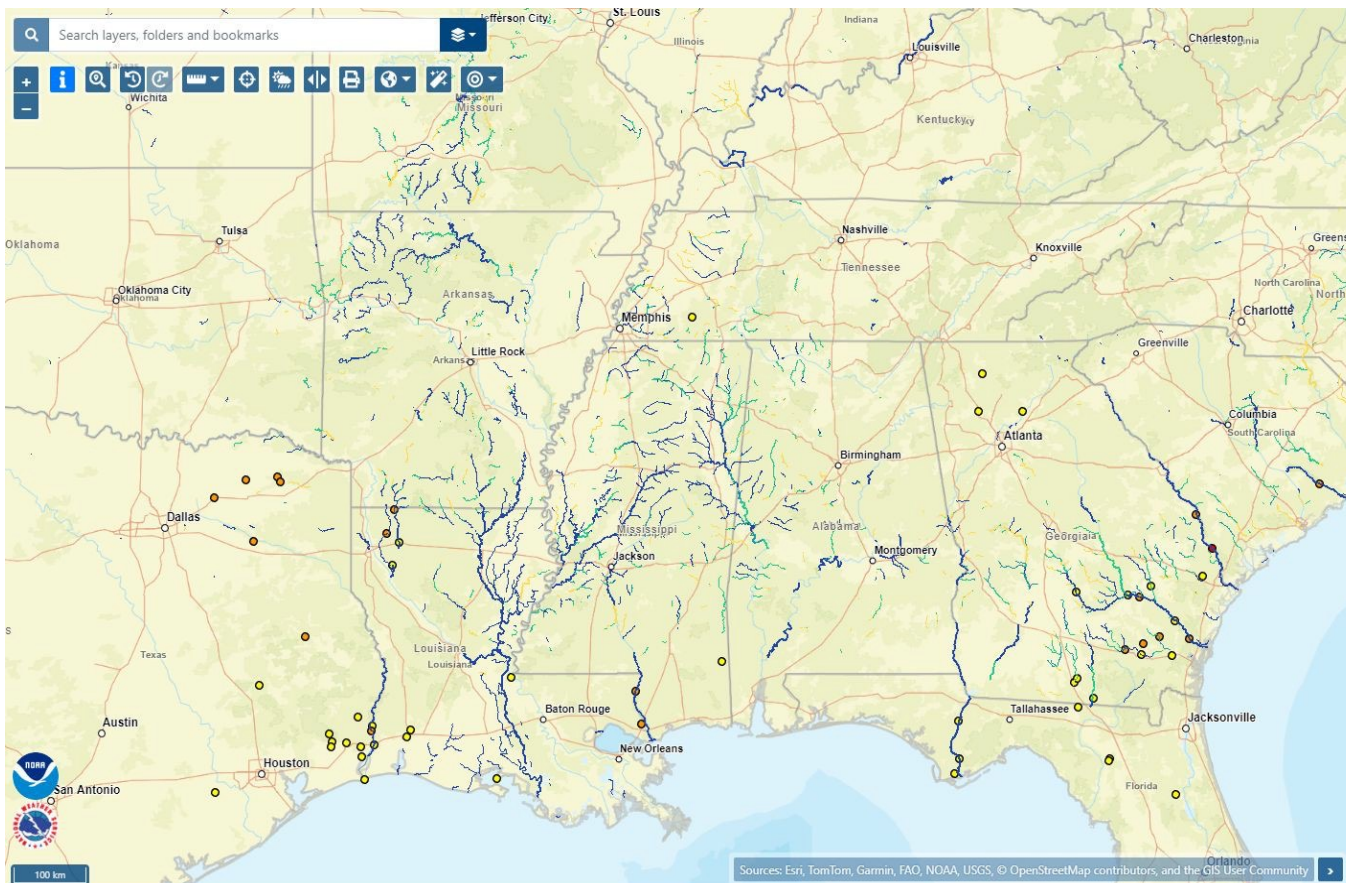
Location: 52.14837°, -124.11575°

Projection: 3857-WGS84 Web Mercator

This experimental map represents the NWS's best approximation of inundation extent based upon modeled river discharge

Bookmark Views:

National Water Model Visualizations: *High Water Probability Forecast*



NWS GIS Viewer | Water

LEGEND

US State Borders

- NWS States Borders

Observed River Stages - at or near flooding

- Major Flooding
- Moderate Flooding
- Minor Flooding
- Near Flood

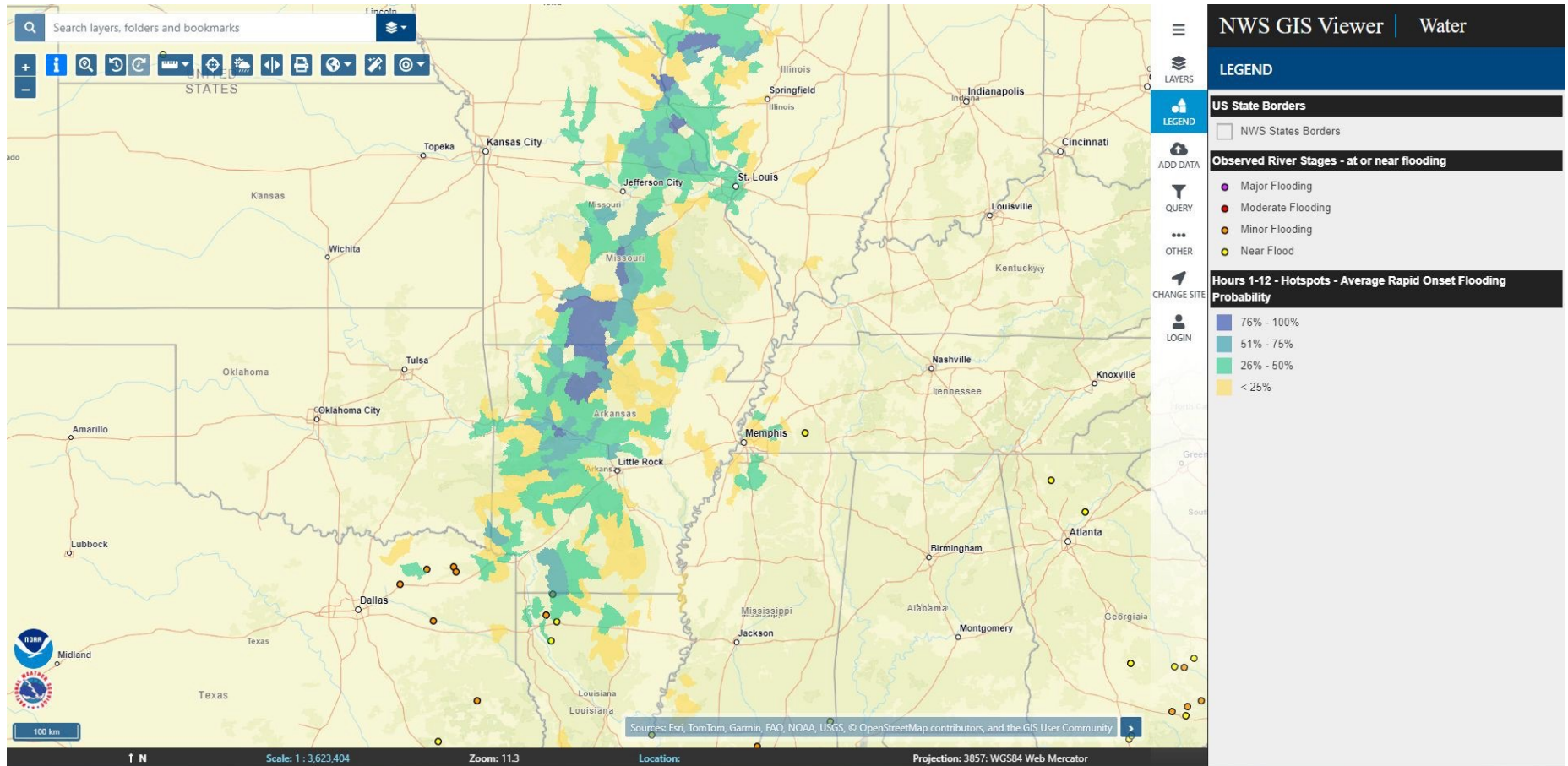
Days 1-5 - High Water Probability

- 76% - 100%
- 51% - 75%
- 26% - 50%
- < 25%
- Insufficient Data

Navigation and utility icons: LAYERS, LEGEND, ADD DATA, QUERY, OTHER, CHANGE SITE, LOGIN.

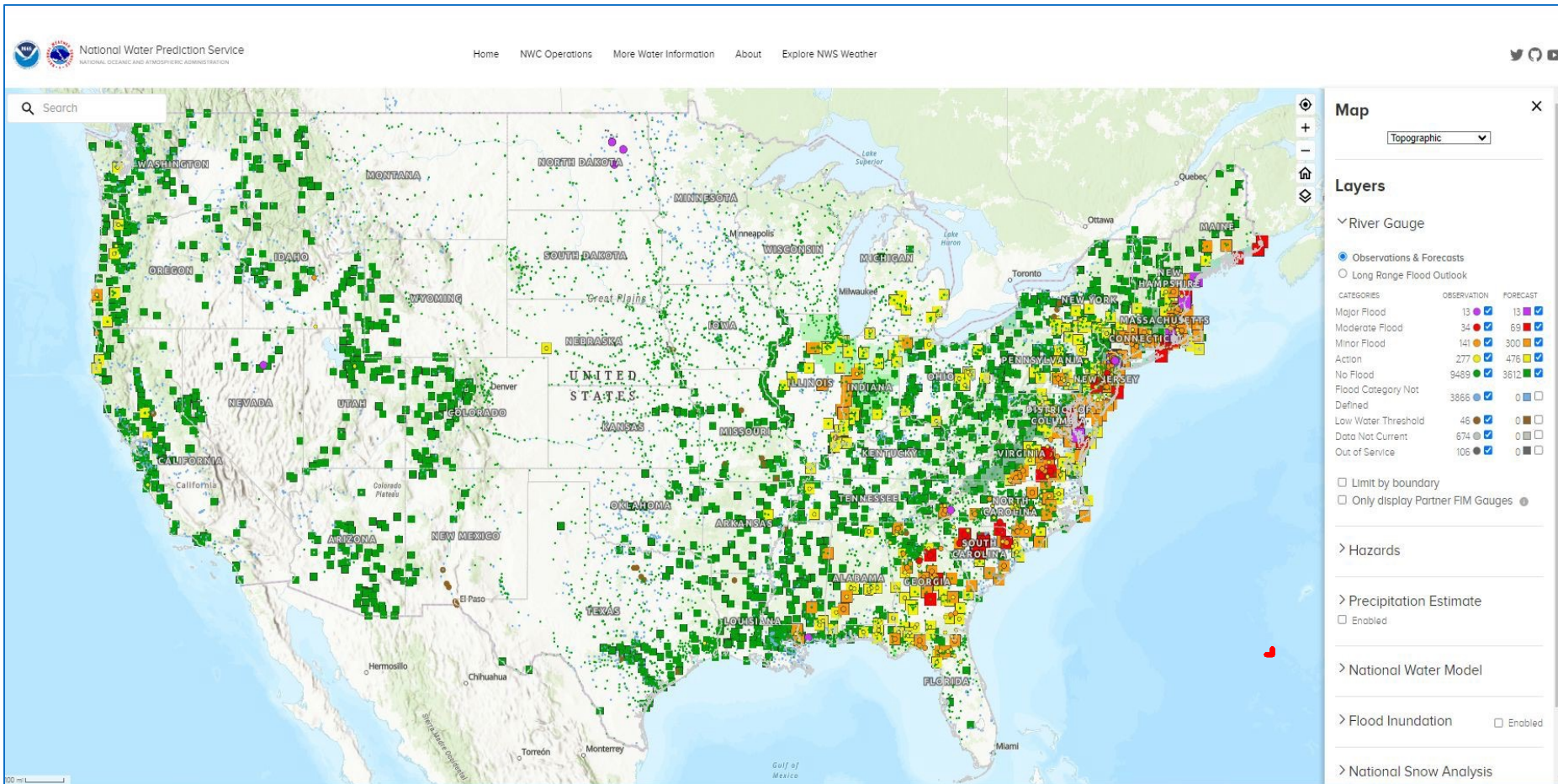
National Water Model Visualizations:

Hotspots - Average Rapid Onset Flooding Probability Forecast (next 12 hours)

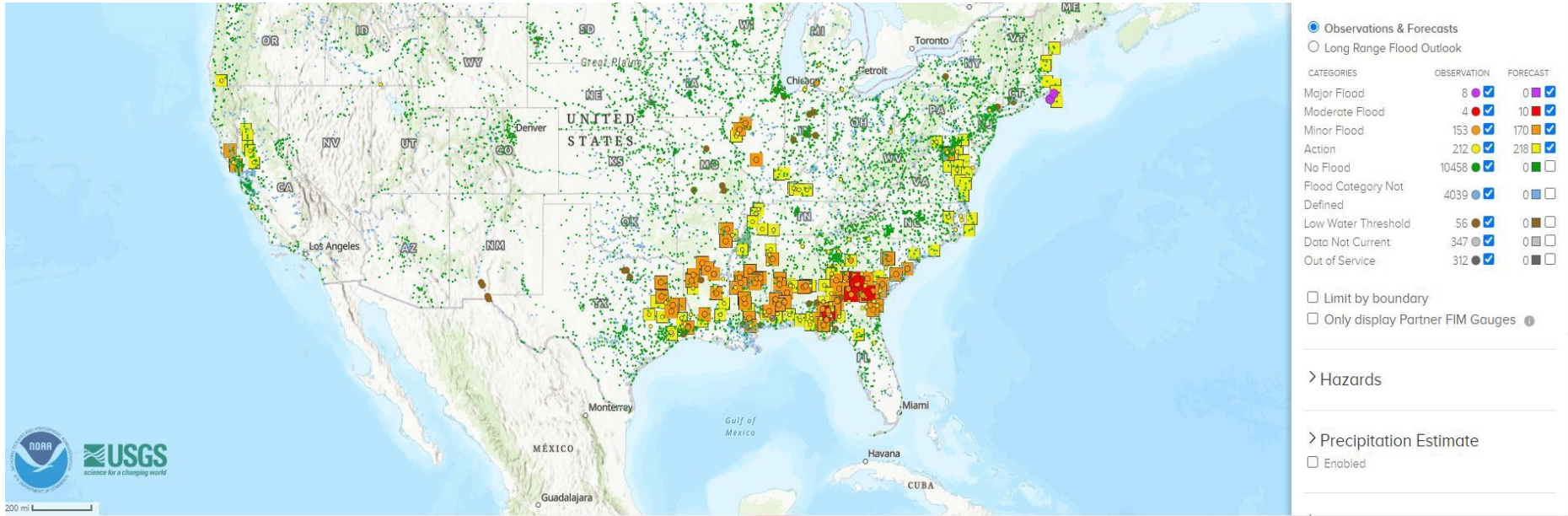


NWM and FIM Services on NWPS

<https://water.noaa.gov>



NWC Products on NWPS



Hydrologic Discussion EXPERIMENTAL



Area Hydrologic Discussion

Archive



National Hydrologic Discussion

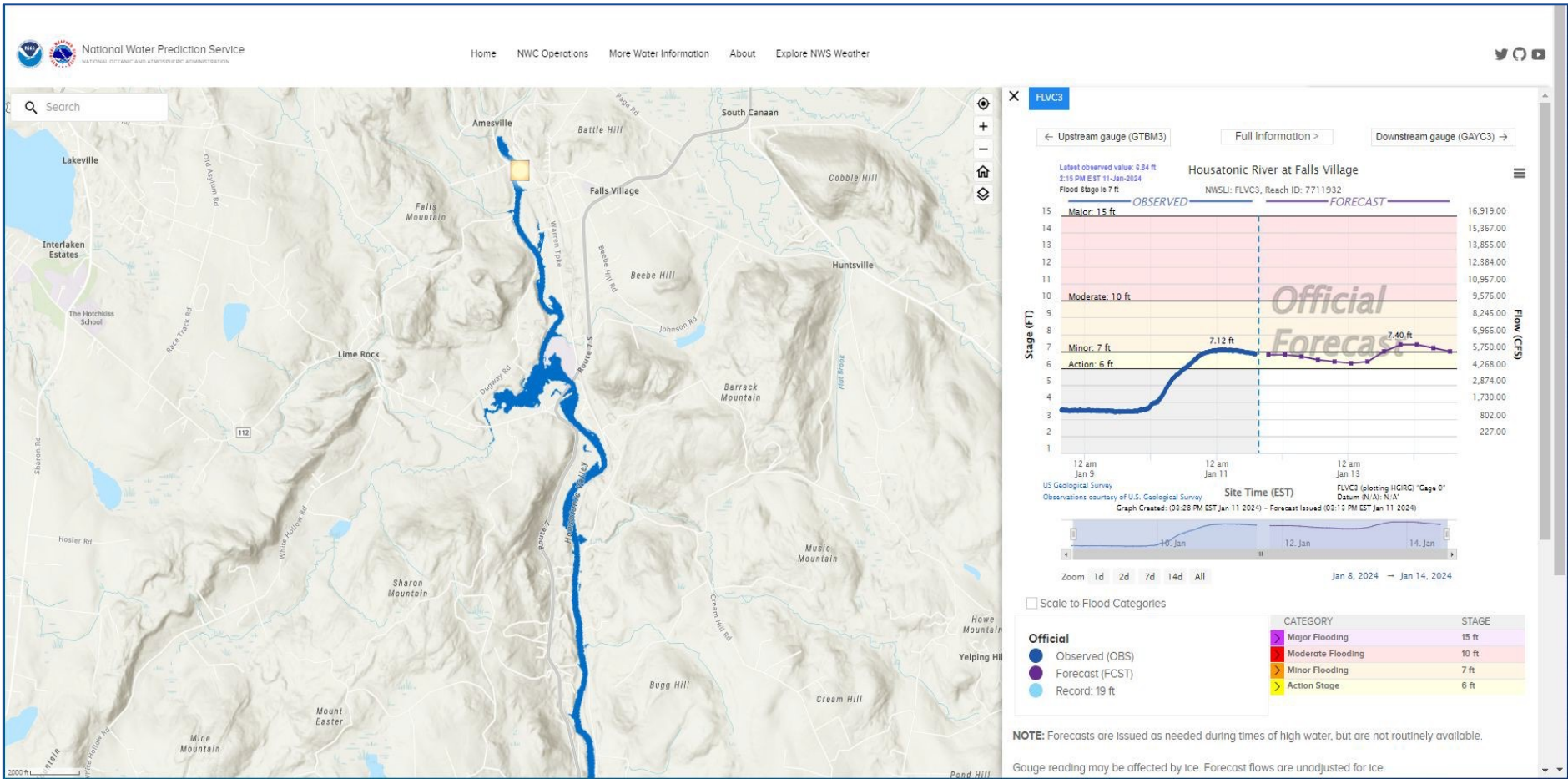
Archive

Flood Outlook EXPERIMENTAL

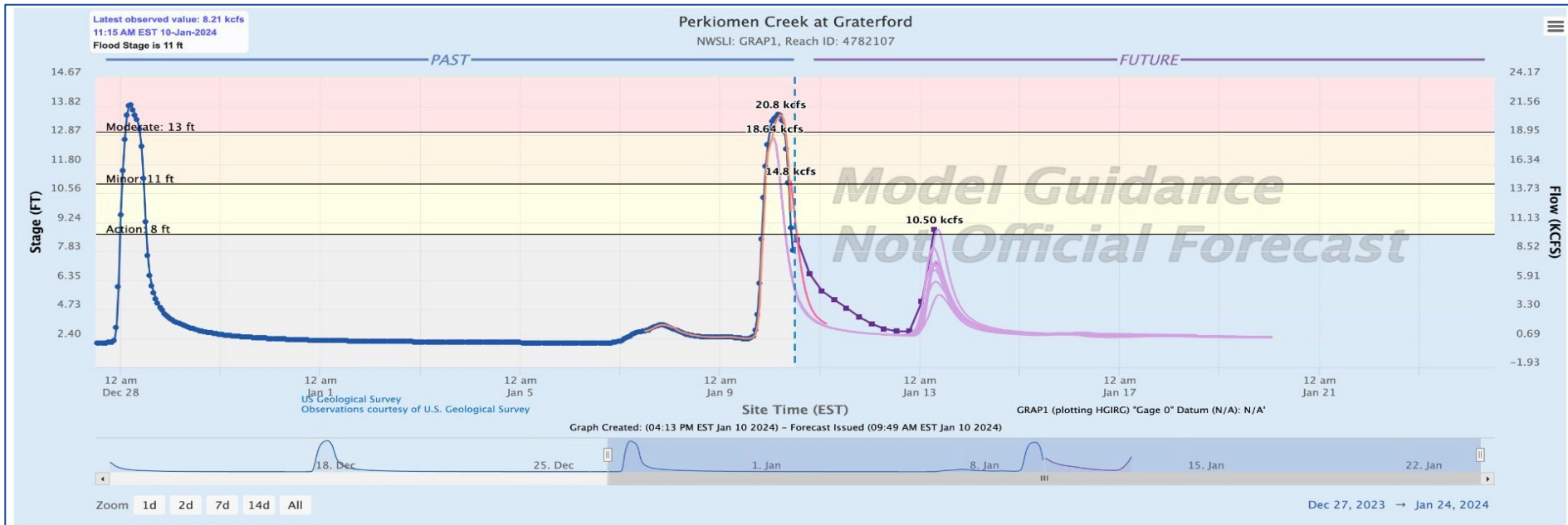


Flood Hazard Outlook

Archives: National Tropical



National Water Prediction Service (NWPS)



Official
 ● Observed (OBS)
 ● Forecast (FCST)

CATEGORY	STAGE
Major Flooding	16 ft
Moderate Flooding	13 ft
Minor Flooding	11 ft
Action Stage	8 ft

National Water Model

- Analysis (ANA)
- Medium Range Blend (MRB)
- Short Range (SR)

Medium Range Ensembles

- Medium Range Ensemble Mean (MRM)
- Medium Range Ensemble 1 (MR 1)
- Medium Range Ensemble 2 (MR 2)
- Medium Range Ensemble 3 (MR 3)
- Medium Range Ensemble 4 (MR 4)

Example of NWM Guidance for Perkiomen Creek, January 10th, 2024

Partner FIM Libraries (formally known as AHPS Libraries)

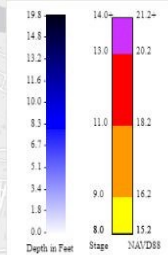
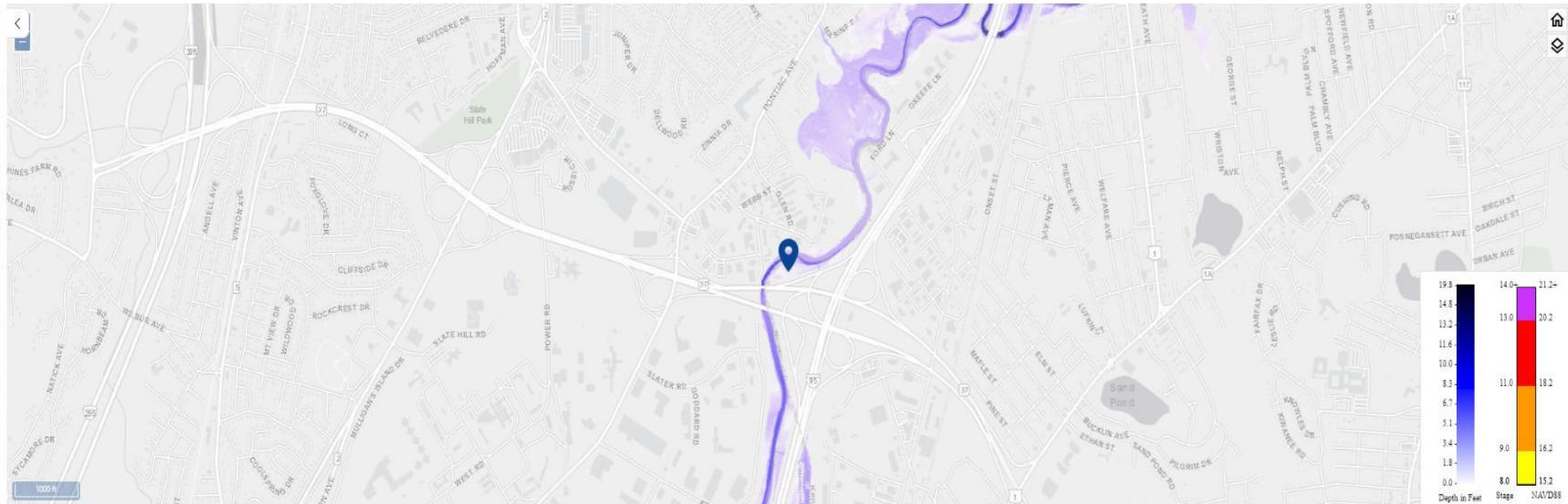
Gauge Location

NAVD88(ft) Stage(ft)

29.2	21
28.2	21
Record Crest: 20.79 ft	
27.2	20
26.2	19
25.2	18
24.2	17
23.2	16
22.2	15
21.2	14
20.2	13
Major	
19.2	12
18.2	11
Moderate	
17.2	10
16.2	9
Minor	
15.2	8
Action	
14.2	7
13.2	6
12.2	5
11.2	4
10.2	3
9.2	2
8.2	1
7.2	0
6.2	0
5.2	0
4.2	0
3.2	0
2.2	0
1.2	0
0.2	0
0	0

Disclaimer

Graphical representation of flood inundation for NWS flood categories are based on steady state hydrologic modeling of water surface elevations for incremental discharges. Map shows approximate inundation areas for given water surface elevations and should not be used for navigation or permitting or other legal purposes, but strictly as a planning reference tool.



- Inundation WWTP, Breach -16.2# NAVD88
- Inundation WWTP, Breach -17.2# NAVD88
- Inundation WWTP, Breach -18.2# NAVD88
- Inundation WWTP, Breach -19.2# NAVD88
- Inundation WWTP, Breach -20.2# NAVD88
- Inundation WWTP, Breach -21.2# NAVD88
- Inundation WWTP, Breach -22.2# NAVD88
- Inundation WWTP, Breach -23.2# NAVD88
- Inundation WWTP, Breach -24.2# NAVD88

NAVD88: 18.2ft Water Level
 Current capacity: 65 %

Current Stage:
 5.81 ft at 2024-05-30 11:45:00 UTC

Highest Forecast: -999

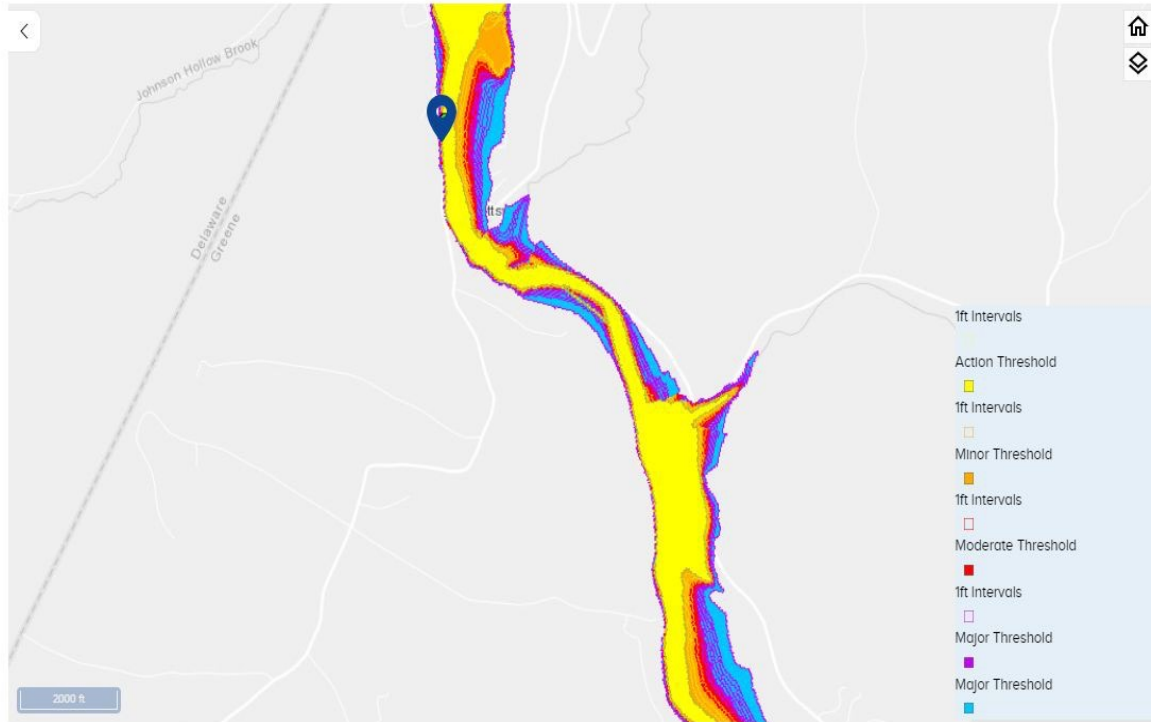
Current Mouse Location
 Latitude: 41.74405
 Longitude: -71.47539



National Water Prediction Service (NWPS)

Gauge Location

- Action 1ft Intervals
- Action Threshold
- Minor 1ft Intervals
- Minor Threshold
- Moderate 1ft Intervals
- Moderate Threshold
- Major 1ft Intervals
- Major Threshold



- Display PTVN6 marker
- Activate PTVN6 FIM Gauge
- Deactivate PTVN6 CATFIM
- Display FEMA's National Flood Hazard Layers

Current Stage:

3.89 ft at 2023-12-01 23:22:05 UTC

Highest Forecast: 6.3 ft

Current Mouse Location

Recent Crests

13.85 ft on 10-26-2021 (P)

17.53 ft on 12-25-2020 (P)

13.55 ft on 10-30-2017

12.03 ft on 02-25-2016

13.71 ft on 09-07-2011

[SHOW ALL CRESTS](#)

Historic Crests

24.38 ft on 08-28-2011

19.57 ft on 03-05-1979

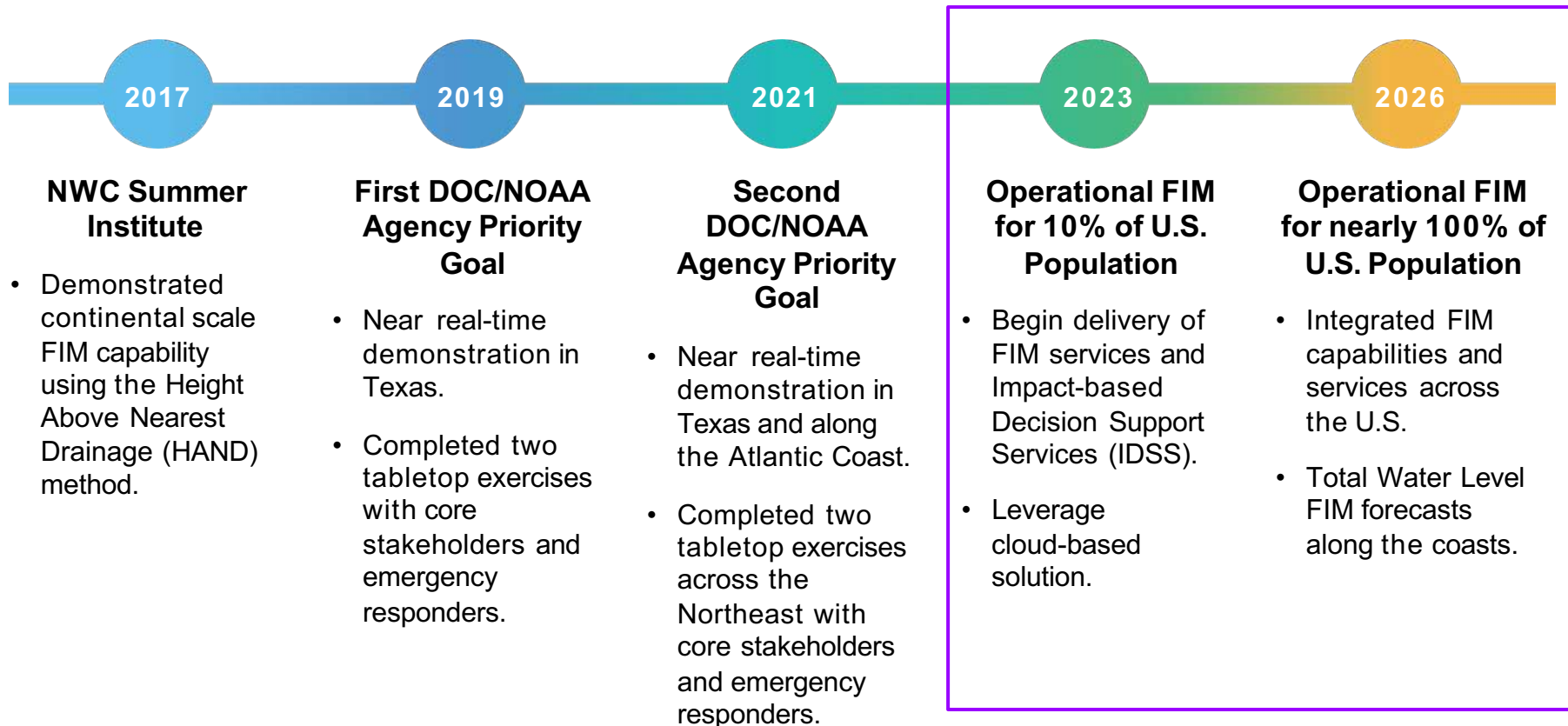
19.5 ft on 01-26-1978

19.39 ft on 01-19-1996

19.14 ft on 10-16-1955

[SHOW ALL CRESTS](#)

Flood Inundation Mapping Timeline



Map Legend



Population served by **October 2023.**



Population served by **October 2024.**



Population served by **October 2025.**

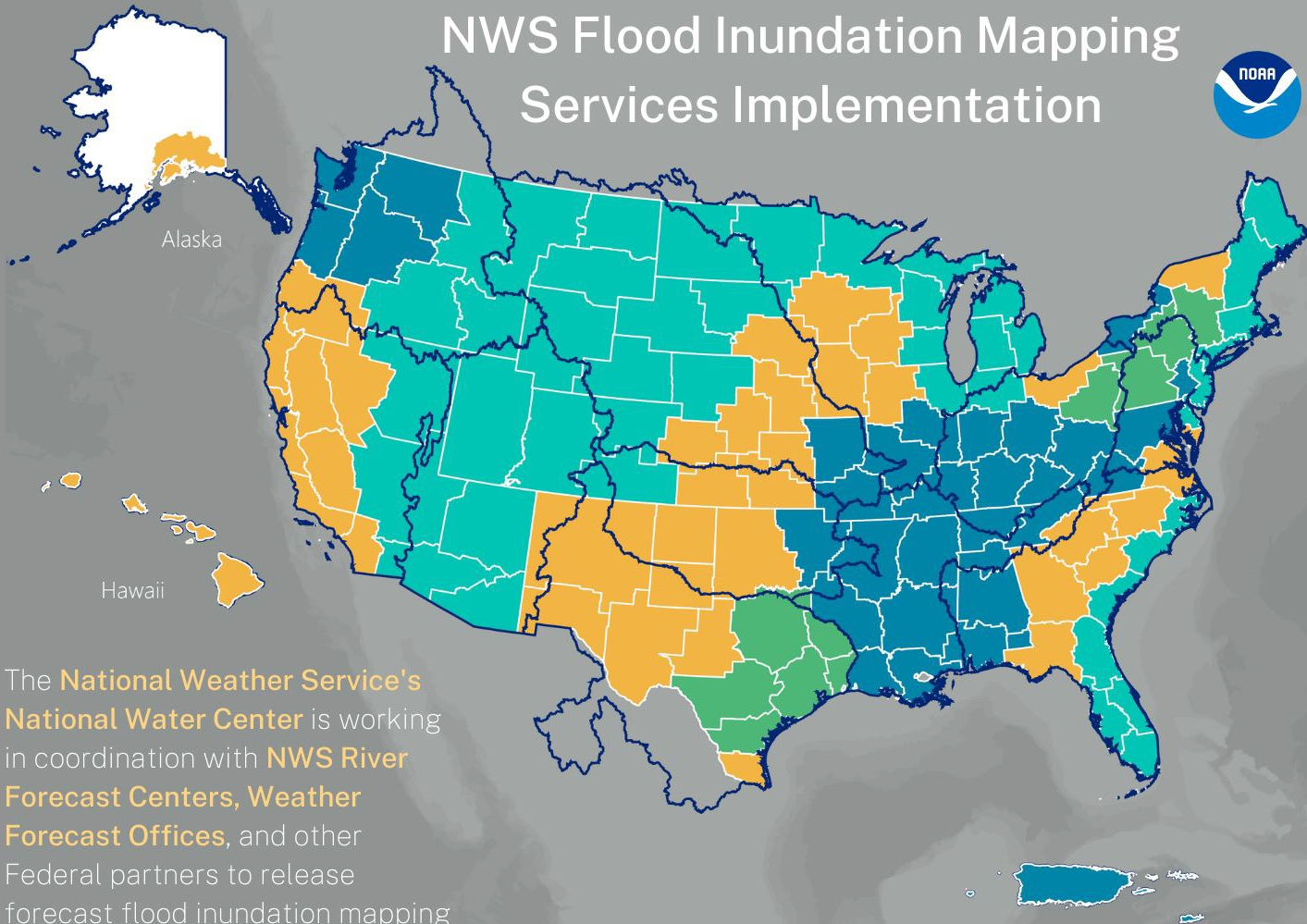


Population served by **October 2026.**

 NWS County Warning Areas

 NWS River Forecast Center Boundaries

NWS Flood Inundation Mapping Services Implementation



The **National Weather Service's National Water Center** is working in coordination with **NWS River Forecast Centers, Weather Forecast Offices**, and other Federal partners to release forecast flood inundation mapping services to the Nation.

*100% is approximate. Does not include all parts of Alaska, American Samoa, and Guam. Implementation areas are subject to change.

Puerto Rico & U.S. Virgin Islands

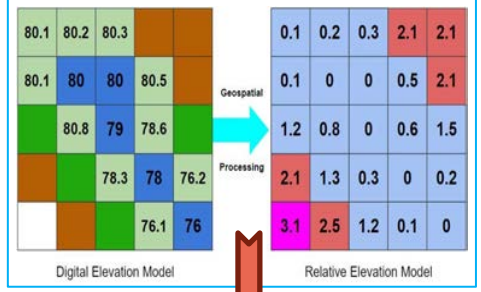
Deliver Forecast Flood Inundation Services

National Water Model Guidance

Completely automated process with no forecaster engagement – but provides complimentary guidance on ~3.4 million stream miles nationwide, including Puerto Rico and the Virgin Islands, Hawaii, and by the fall - portions of Alaska

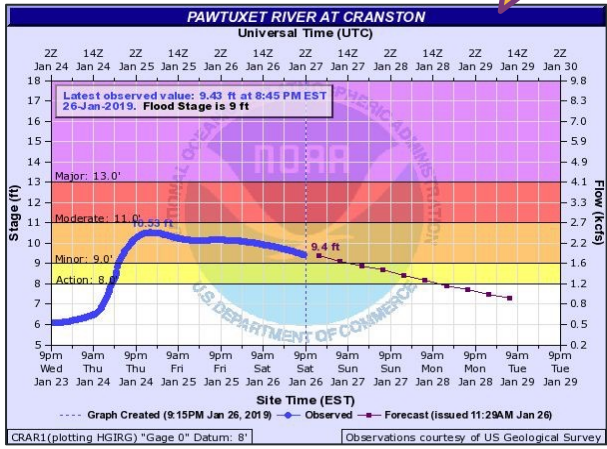


Height Above Nearest Drainage (HAND)

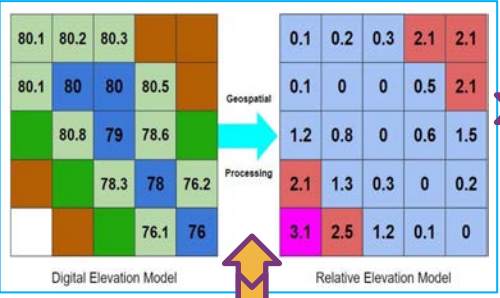


River Center Forecasts

Forecasters heavily engaged in the forecast production

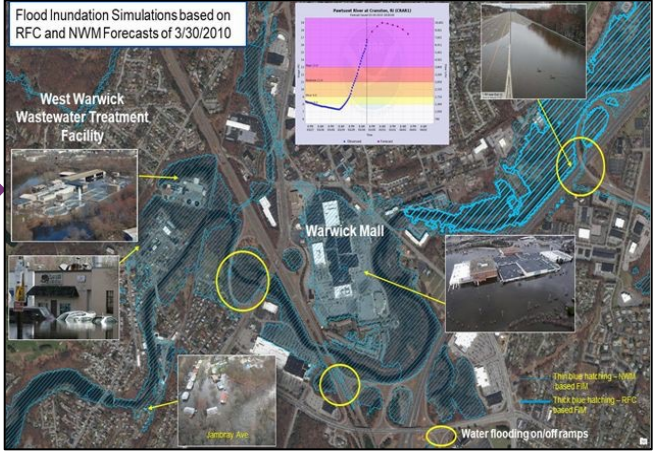


Height Above Nearest Drainage (HAND)

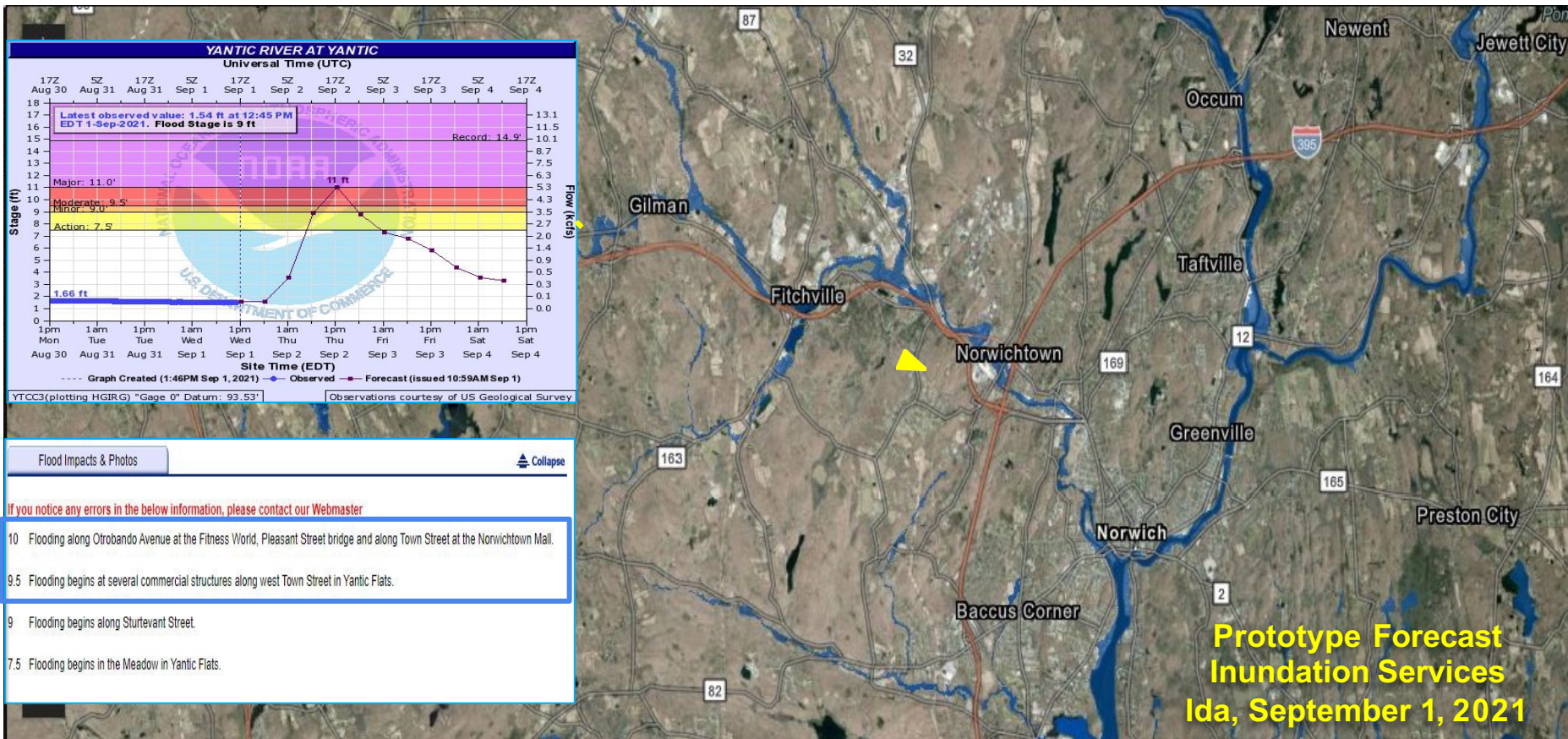


+RASToFIM & RASoREM techniques

Pawtuxet River Valley West Warwick/Warwick



Value of FIM Services - Visualizations to depict impacts



Integrating FIM Services into our IDSS

Disclaimer: This experimental map represents the NWS's best approximation of inundation based upon modeled river discharge

Yantic River at Yantic, CT

Forecast Crest Height: 11 Feet

Map Height Shown: 11 Feet

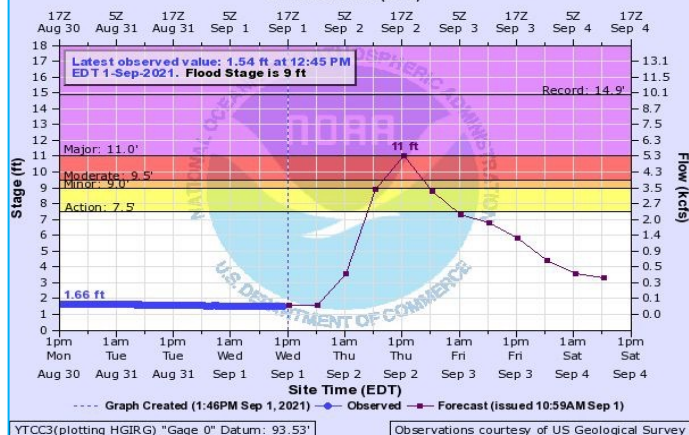
FIM Source: RFC FIM 5 Day Max Extent

FIM Type: Dynamic (Depth NOT Included)

FIM Creation Time: Sept 1st, 1 pm

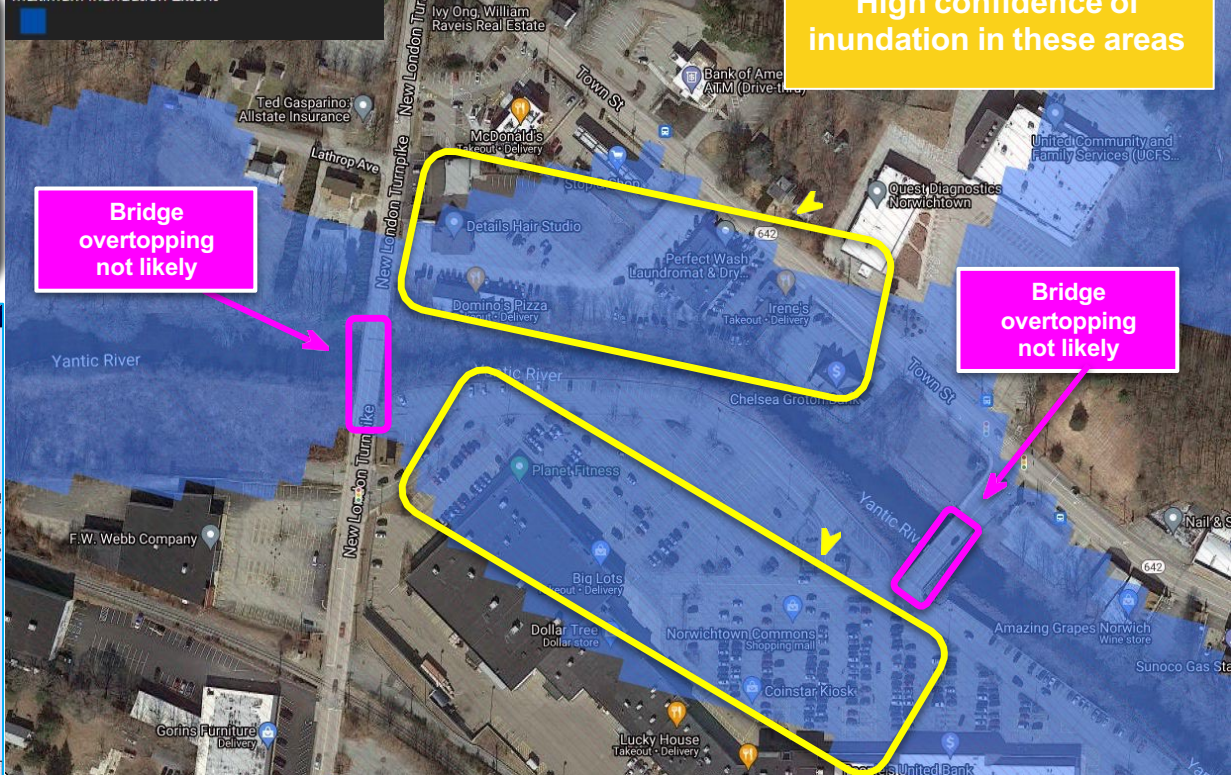
YANTIC RIVER AT YANTIC

Universal Time (UTC)



RFC 5-Day Max Inundation Extent Forecast

Maximum Inundation Extent



FIM & NWM Visualizations

Experimental Services

FIM Services available for 10% of the nation


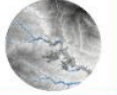
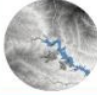
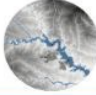
- *NWM Latest Analysis FIM*
- *RFC 5-Day Max Extent FIM*
- *NWM 5-Day Max Extent FIM*

Non-FIM NWM Services

- *High Water & Peak Flow Arrival Time, Max High Flow Magnitude Forecast, & High Water Probability Forecasts*
- *Rapid Onset Flooding Probability Forecasts*
- Services available for ingest into your local GIS systems

Visualizations available on NWPS & the NWS GIS Viewer

- *NWPS* (<https://water.noaa.gov>)
Includes FIM services, CATFIM in 10% area, RFC & NWM forecast hydrographs, and a few NWM non-FIM visualizations
- *NWS GIS Viewer* (<https://viewer.weather.noaa.gov/water>)
Includes FIM services and all Non-FIM NWM services

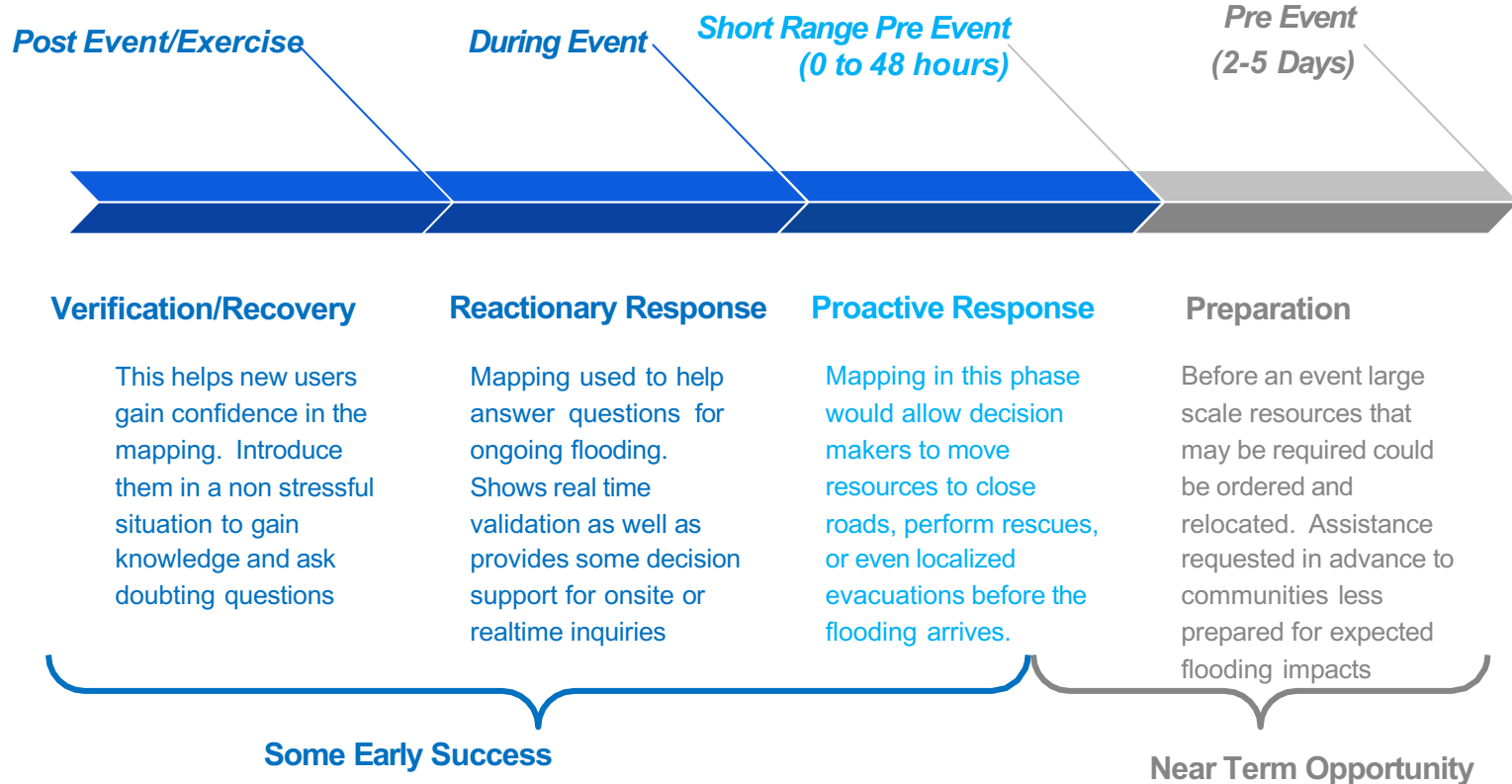
Dynamic FIM Services Comparison Table			
FIM Service	NWM Latest Analysis FIM	RFC 5-Day Max FIM	NWM 5-Day Max FIM
			
Data Type	Observation based simulations [precip. estimates & USGS gage observations]	Forecast [5-day RFC forecasts]	Forecast [5-day GFS]
Total Latency	55 minutes	45 minutes	6 hours 30 minutes
Updates	Hourly	Hourly [if new forecasts available]	Every 6 hours
HAND Inputs	Flow	Flow	Flow
Threshold Source [NWM/RFC]	NWM High Water	RFC	NWM High Water
Error Sources	<ul style="list-style-type: none"> • RADAR or gage malfunctions • For ungaged reaches, errors associated with NWM & estimated precipitation • HAND errors [10m DEM resolution] 	<ul style="list-style-type: none"> • Rainfall forecast • RFC flow simulations • Routing of flow using NWM physics • HAND errors [10m DEM resolution] 	<ul style="list-style-type: none"> • GFS forecast • NWM flow simulations • HAND errors [10m DEM resolution]
FIM Domain	Entire NWM domain [CONUS, HI, PR, US Virgin Islands]	Downstream of AHPS forecast points	CONUS
Mapping Threshold	Only available for reaches that meet and/or exceed the "High Water" threshold	Only available based on active RFC forecasts at or above "Action Stage"	Only available for reaches that meet and/or exceed the "High Water" threshold
When to Use	Use as a snapshot of the most recent modeled inundation	Use when RFC forecast is available	Use for rivers and streams not covered by RFC forecast

© Copyright 2023 of NOAA. Version published 10/2023



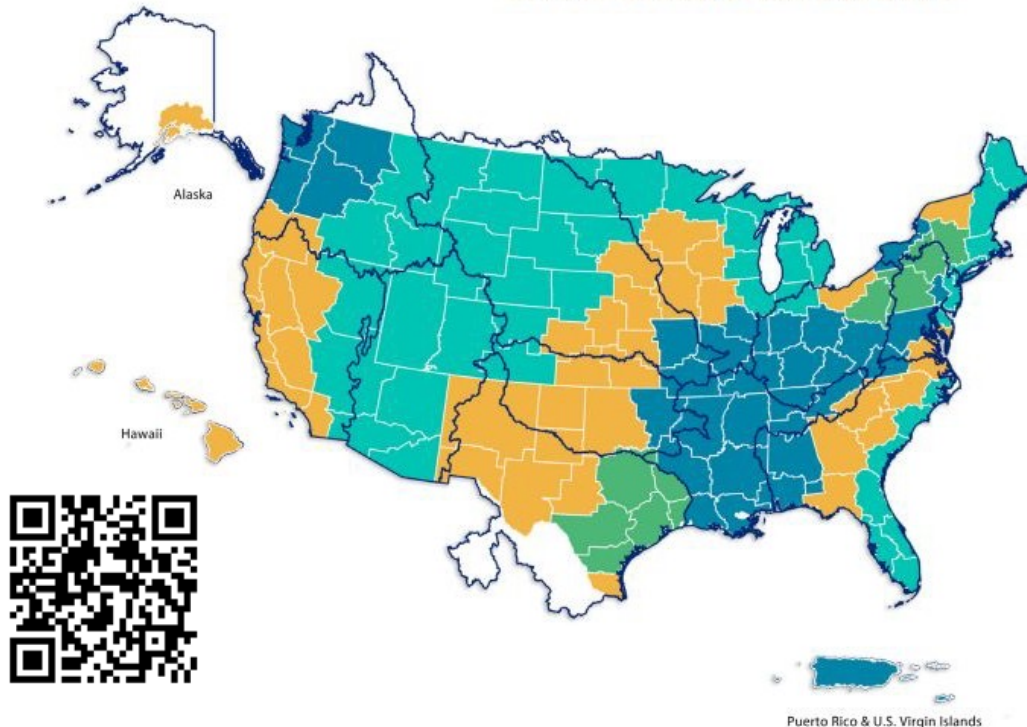
Tip of the Iceberg

Other Opportunities for Flood Maps to Benefit Decision Makers

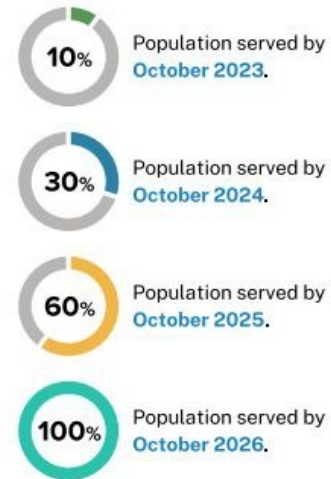


Phased Implementation Approach Through 2026

NWS Flood Inundation Mapping Services Implementation



Map Legend



- NWS County Warning Areas
- NWS River Forecast Center Boundaries

*100% is approximate. Does not include all parts of Alaska, American Samoa, and Guam. Implementation areas are subject to change.

OWP
Operations



<https://www.weather.gov/owp/operations>



OWP | OFFICE OF
WATER
PREDICTION



Thank You!



David R. Vallee



david.vallee@noaa.gov



<https://water.noaa.gov>